



Ferdi Schreiber

12 series



Ferdi Schreiber

Almsick 23
48703 Stadtlohn
Germany

Tel. ++49 (0) 25 63 - 74 64

Fax ++49 (0) 25 63 - 65 32

E-Mail: ferdinand.schreiber@web.de

Internet: www.ferdinand-schreiber.com



1
»rainy landscape«
zinc sheet
12,2 x 34,8 inch
1998



2 a - d
»sunrise«
zinc sheet
12,2 x 35,4 inch
2002

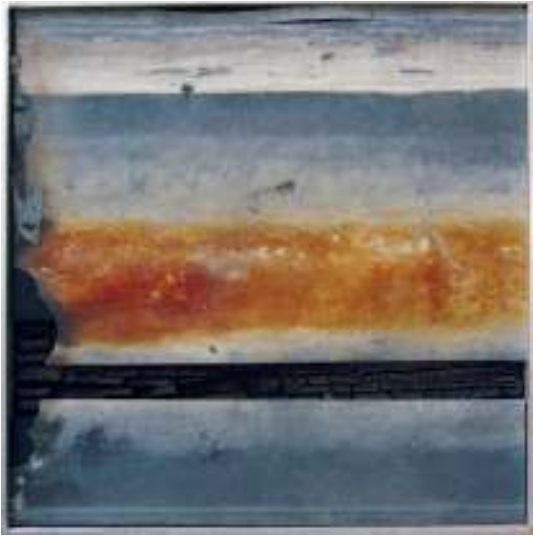




3 a
»dandelion clock«
lead, steel plate
12,2 x 35,4 inch
2007



3 b
»rosery«
lead, steel plate
12,2 x 35,4 inch
2007



4
tryptichon
zinc sheet, bog oak
13,8 x 13,8 - 13,8 x 6,7 - 13,8 x 13,8 inch
2007



5

»aquiline horizon«

lead, wire, nails

12,2 x 35,4 inch

2007



6 a - c
»twister«
zinc sheet
12,6 x 6,7
12,6 x 12,6
12,6 x 12,6 inch

2003





7 a - d
»burned cities«
lead, burned poplar wood
9,5 x 13,8 inch

1997



8 a - d
»ships«
lead, sand paper
8,4 x 8,4 inch

2008





9 a - i
»saw cuts«
oak, foam material
8,3 x 8,3 inch

2008





10 a - d
»boundaries«
lead, nails, wire
5,7 x 5,7 inch

2007



11 a-b
»sunset«
lead, various woods
9,8 x 9,8 inch

2007





12 a-j
»wounded universe«
lead, tar pasteboard
4,7 x 4,7 inch

2008



Vita

Born August 25th 1947 in Bochum, North-Rhine-Westfalia, Germany

1954 moves to Münster, Germany

1968 -1973 University of Münster, Germany, Diploma in art, geography and sport

1974 Teacher at the High School in Borchen, Germany

1987 Teacher at the High School in Vreden, Germany

He studied art at the School of Education, University of Münster, including working with the professors Peters und Wilmsmeyer, Gräsel and Bussmann.

Ferdi Schreiber started his art work with aleatoric picture processes on the one hand and stiffly constructivistic montages inside of circle systems on the other. For 15 years he has been involved in working with burned and used wood, wood from dead and endangered trees, saw blades and other materials.

Exhibitions and events

1970 First exhibition in Münster

1973 Exhibition at the local mutual savings bank, Sparkasse Stadtlohn

1977 Exhibition at the Kunstverein ARTig (art society) in Velen

1982 Exhibition at Schloss Ahaus (Caste of Ahaus)

1983 Art event in Stadtlohn "Metamorphosis of a car"

1985 Beach art event in northern Denmark

1990 - 2003 Exhibitions in Aachen, Jülich, Kulturfabrik Krefeld, Kunstverein Gronau, Kunstverein Gescher, Kunstverein Elsterwerda, Deutsche Bank Rheine, District Court in Münster, Event „In the flow of time“, Collage for the High School, Stadtlohn, Memorial for the expelled Jews in Stadtlohn, Memorial for the victims of drugs

More exhibits in Berlin, Murcia, Amsterdam, Tübingen und Düsseldorf.

Since 1995 permanent exhibition at the Hülsta-Werke in Stadtlohn.

On my work

The material that I prefer to work with can be found in my close surroundings, my homeland: wood. I love processing the woods of the elm tree, the oak tree, the bog oak tree, the cherry tree, the walnut tree and the German trees "Rubinie" and Weymouth Pine. Through manipulating the material with different tools and working on the material with the element of fire, I consciously interfere with its wooden structures. Despite these intended changes, it is important to me to leave the wood's nativeness and singularity visible.

I treat the other materials in the same way.

New visual impulses emerge from the assembly of the different materials within a new context.

Literary thoughts that distinctively accompany me throughout my artistic work circle around the different phases of the cycle of life.

The coming into being, the growing, the strengthening and the passing: everything in the context of the human perception of time.

Life as leaving trails.

Ferdi Schreiber · Almsick 23 · 48703 Stadtlohn · Germany · Tel. ++49 (0) 25 63 - 74 64 · Fax ++49 (0) 25 63 - 65 32



Ferdi Schreiber

Zwölf Serien